



Synergy Global Technology Inc

www.RackmountMart.com

IP Module

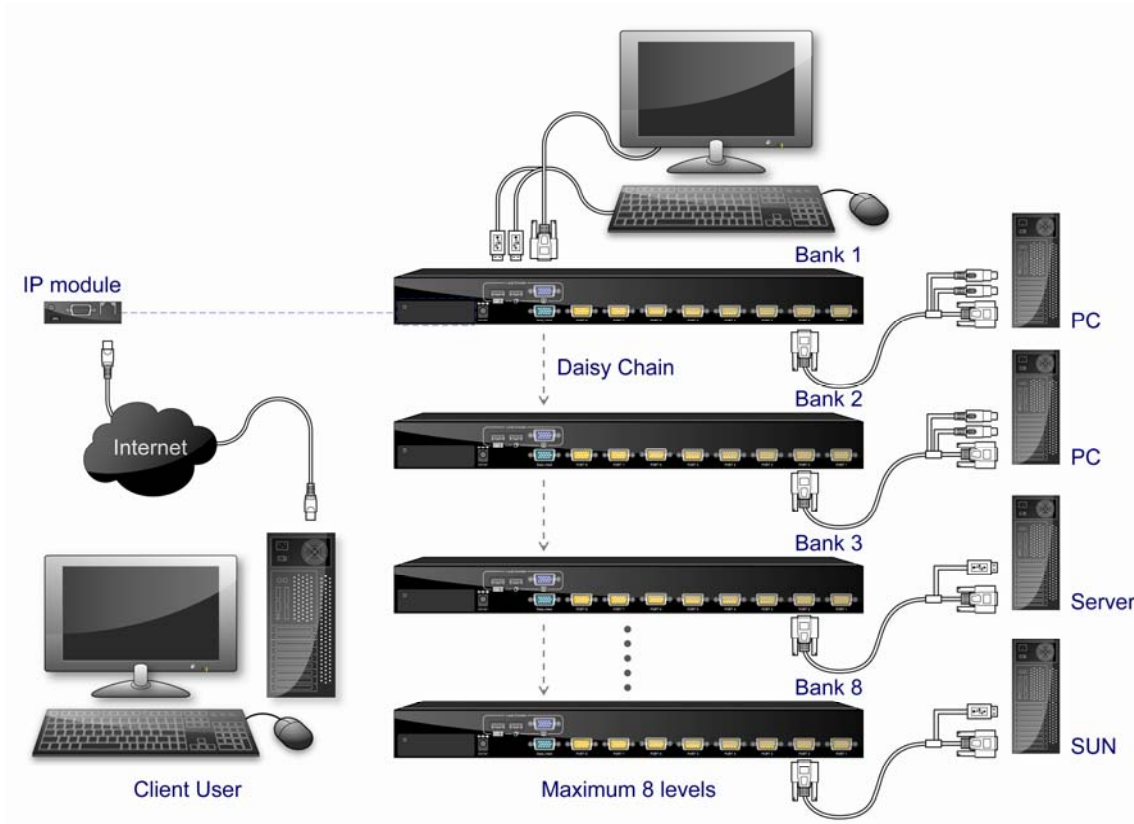
Quick Setting Guide

Toll Free: 1-888-865-6888

Tel: 510-226-8368 Fax: 510-226-8968

Email: sales@RackmountMart.com

1. Application Diagram



2. Remote Console installation

The preconfigured IP configuration of IP module from factory is as the following:

IP:	192.168.1.220
Subnet Mask:	255.255.255.0
Default Gateway:	192.168.1.1

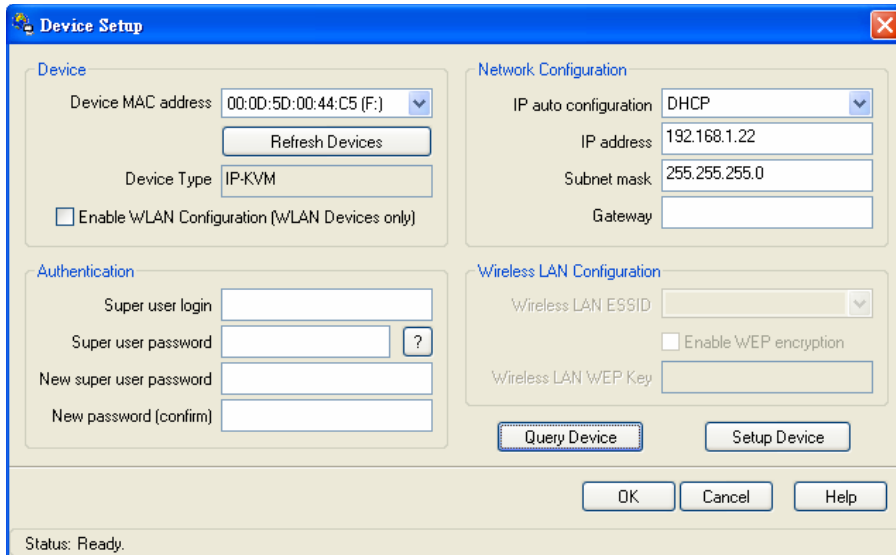
You can change these setting by PSetup.exe program, connected to the IP Module to be configured through Ethernet cable. PSetup.exe program can be found on the CD-ROM come with the product.

1. Connect IP-module to Computer via Ethernet cable
2. Using PSetup.exe to look for IP-KVM switch.
 - a. Select device showing MAC address which labeled on bottom of IP-KVM switch.
 - b. Query Device

The screenshot shows the 'Device Setup' application window. It is divided into several sections:

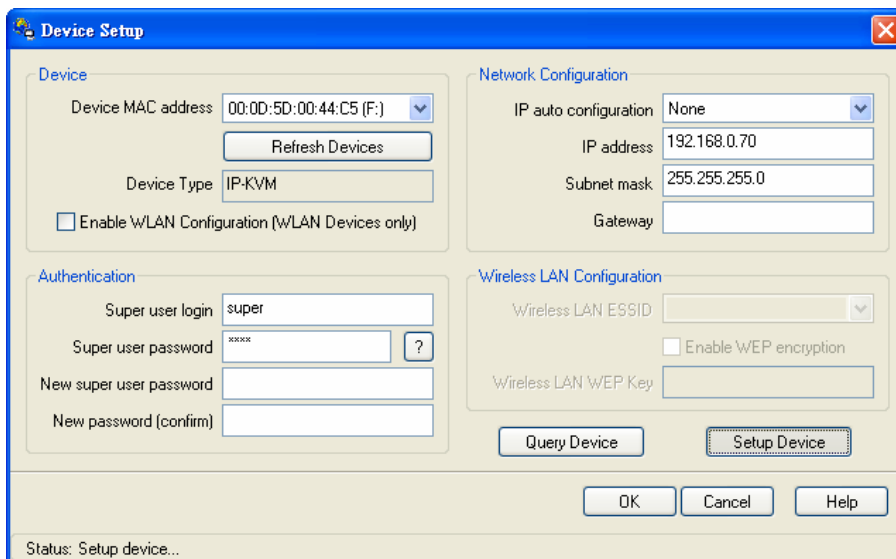
- Device:** A dropdown menu for 'Device MAC address' is open, showing 'FE:00:00:50:00:3A' and '00:0D:5D:00:44:C5 (F:)' as options. Below it is a 'Device Type' field and a checkbox for 'Enable WLAN Configuration (WLAN Devices only)'.
- Network Configuration:** A dropdown for 'IP auto configuration' is set to 'None'. Below it are input fields for 'IP address', 'Subnet mask', and 'Gateway'.
- Authentication:** Input fields for 'Super user login', 'Super user password', 'New super user password', and 'New password (confirm)'. A question mark icon is next to the password field.
- Wireless LAN Configuration:** A dropdown for 'Wireless LAN ESSID', a checkbox for 'Enable WEP encryption', and an input field for 'Wireless LAN WEP Key'.

At the bottom of the window, there are buttons for 'Query Device', 'Setup Device', 'OK', 'Cancel', and 'Help'. The status bar at the bottom left indicates 'Status: Ready.'



3. Setup fixed IP

- Setup "IP auto configuration" or setup IP address and Subnet mask
- Enter Supervisor login and password for Authentication (default user name and password: super/pass)
- Setup Device. If super login was authenticated, it'll show "Successfully configured device". Otherwise it'll show "Permission Denied".



- Unplug Ethernet cable to IP module and re-plug cables properly.
- Connect CAT5 cable to IP-based module and the other end of cable to LAN (Local Area Network) switch.