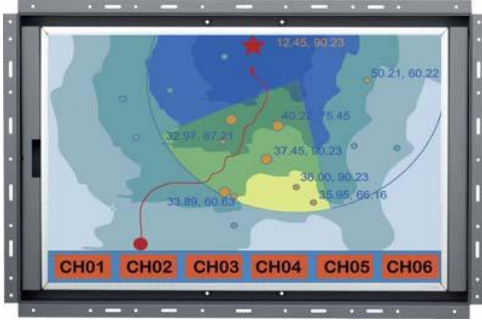


ID-19Pw-LED 19" Widescreen LCD w/ LED-backlit Panel Display

Universal open frame mounting



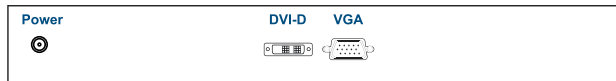
Display Benefits

- ▶ 19" widescreen LCD with resolution 1440 x 900
- ▶ Green LED-backlit panel technology
- ▶ Rugged construction against external impact

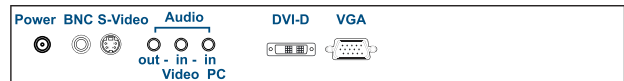
Options

- 3G / HD / SD-SDI Broadcast-grade input
- MC Multi-display control solution
- W19" Touchscreen : Capacitive, Resistive
- S-Video + Composite (BNC) or Audio input
- HDMI or DVI-D (either one for AV2.2 upgrade)
- MIL-type or lockable connector
- 48V, 24V or 12VDC power
- Quad display for CCTV
- TV - Analog

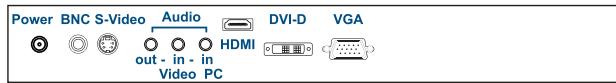
Basic I/O



AV2.2D upgrade I/O



AV3.0 upgrade I/O with advanced features



AV2.2H upgrade I/O



Specifications

LCD Panel

Manufacturer :	
Size (diagonal) :	19" Widescreen TFT
Max resolution :	1440 x 900
Brightness (cd/m2) :	250
Backlight :	LED
Colors :	16.7 M
Contrast ratio (typ) :	1000 : 1
Viewing angle (H/V) :	160° x 160°
Active area (mm) :	408 x 255
MTBF (hrs) :	30,000
Signal input :	DVI-D / VGA

Weight

Net : 5 kgs (11 lbs)

Mounting :

Universal mount / VESA mount

Environmental

Operating :	0 to 50°C Degree
Storage :	-5 to 60°C Degree
Relative humidity :	5~90%, non-condensing
Shock :	10G acceleration (11 ms duration)
Vibration :	5~500Hz 1G RMS random vibration

Casing Color :

Dark grey (RAL 7037)

Regulatory :

FCC, CE

Power

Input :	Auto-sensing 100 to 240VAC, 50 / 60Hz
Consumption :	Max. 48 Watt, Standby 5 Watt

Dimensions

Product : 505.5 x 57.1 x 335.1 mm / 19.9 x 2.2 x 13.2 inch

Diagrams (mm)

