

# EM-1001 / 1002 Environmental Control Management

EM-1001 / 1002 consolidates the integrated sensors and devices.

Up to 16 x Control box can be connected by daisy chain for IP remote access.

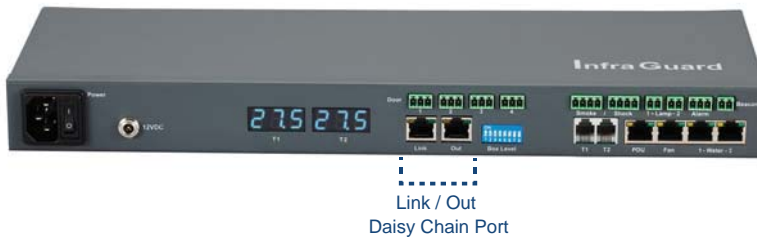
We offer two control management models with same integrated sensor and device I/O.



## EM-1001 - Master control box ( 1st Level )



## EM-1002 - Slave control box ( 2nd - 16th Level )

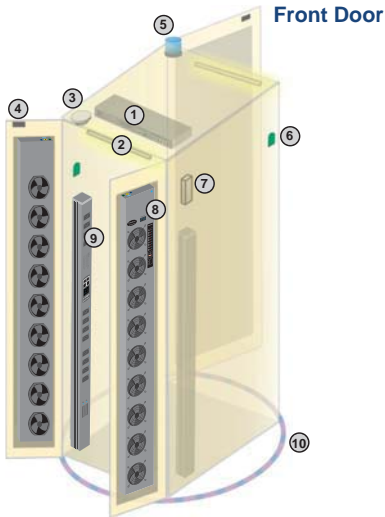


	EM-1001 ( Master Box )	EM-1002 ( Slave Box )
Daisy Chain	1st Level	2nd - 16th Level via Master Box
SNMP	✓	
LAN Port	✓	✗
Daisy Chain Port - LINK	✗	✓
Daisy Chain Port - OUT	✓	✓
Dual Power Input Option	✓	✓
Temperature LED	✓	✓
Temp-Humid Sensor	2	2
Smoke / Shock Sensor	2	2
Water Sensor	2	2
Door Sensor	4	4
LED Light Bar	2	2
LED Flashing Beacon	1	1
Alarm Board	1	1
Integrated PDU	4 ( daisy chain )	4 ( daisy chain )
Integrated Fan Unit	4 ( daisy chain )	4 ( daisy chain )
Product Dimension ( W x D x H )	400 x 135 x 39.7 mm / 15.7 x 5.3 x 1.6 inch	
Net Weight	1.06 kgs / 2.3 lbs	
Power Consumption	Auto-sensing 100 to 240VAC, 50 / 60Hz, Max. 48 Watt	
Operating Temperature	0 to 55°C Degree	
Storage Temperature	-5 to 60°C Degree	
Relative Humidity	5~90%, non-condensing	
Mounting	1U Rackmount	
Safety Regulatory	FCC & CE certified	
Environmental	RoHS2 & Reach compliant	

# EM-1001 / 1002 Environmental Control Management

In One Box - One Cabinet connection, complete range of integrated sensors and devices can be applied to the cabinet. Multiple sensors / integrated devices can be applied to one single cabinet in order to achieve the optimum environmental monitoring conditions.

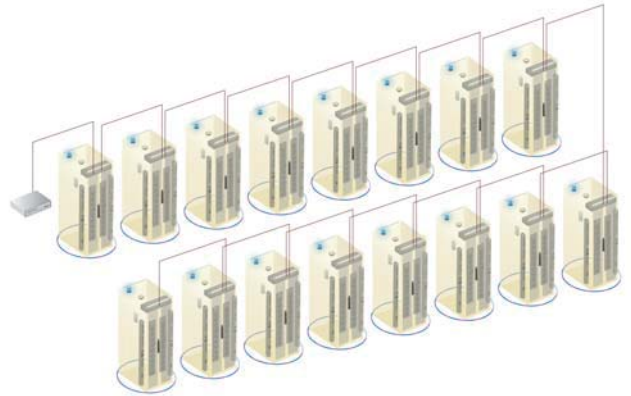
## Suggested Sensors / Devices Allocation



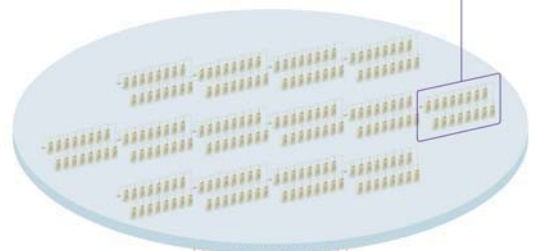
Item	Cabinet
① EM1001 / 1002	1
② LED Light Bar	2
③ Smoke Sensor	1
④ Door Sensor	2
⑤ Flashing LED Beacon	1
⑥ Temp. & Humid. Sensor	2
⑦ Shock Sensor	1
⑧ Fan Unit	2
⑨ PDU	2
⑩ Water Sensor	1

## Cabinet Level Connection

- EM-1001 as the 1st level master box
- The EM1001 / 1002 can be cascaded up to 16 levels
- Only 1 x IP for 16 x EM1002 remote access



- Daisy chain by Cat5/6 cable
- Max. distance between 2 boxes is 20M
- Max. distance in a daisy chain group up to 300M



Software supports 30 x IP address ;  
 480 x boxes ;  
 1920 x Integrated kWh PDU ;  
 1920 x Integrated Cooling Fan Unit ;  
 Thousands of Environmental Sensors

Remote access by  
 web-based GUI  
 from anywhere  
 around the world

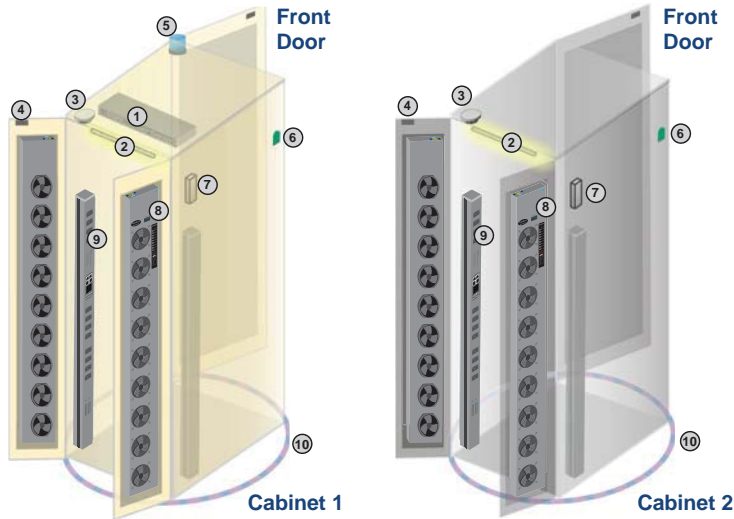


5 x concurrent user for remote management

# EM-1001 / 1002 Environmental Control Management

EM-1001 / 1002 provides multi-ports for some critical sensors / devices. It means that enables users to share the control box and some duplicated sensors / devices to two cabinets. A cost efficient environmental management can be achieved.

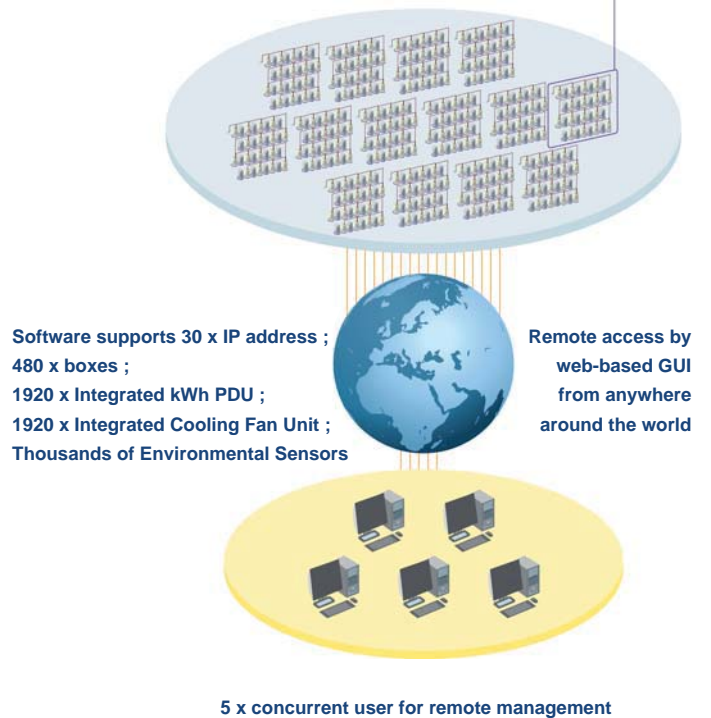
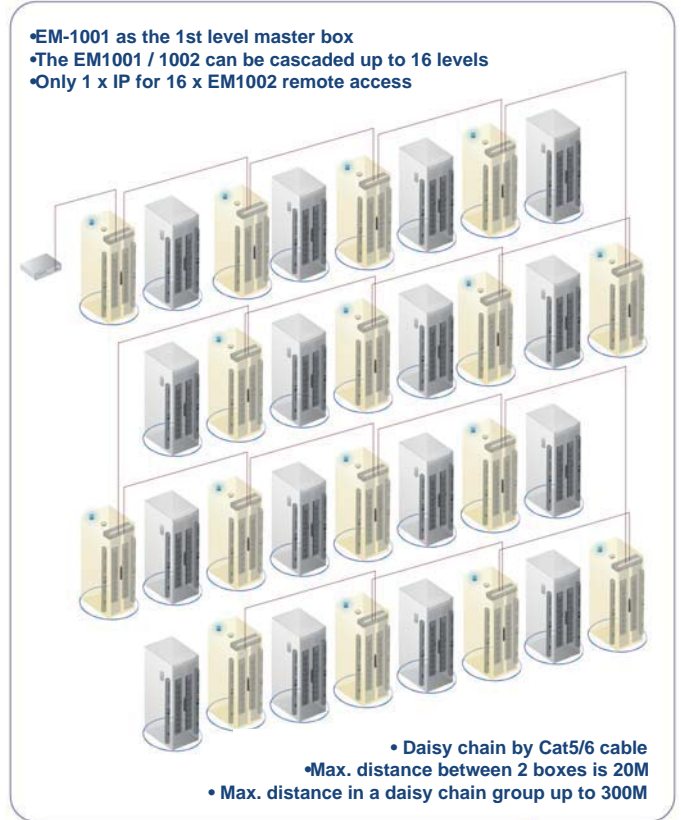
## Suggested Sensors / Devices Allocation



Item	Cabinet 1	Cabinet 2
① EM1001 / 1002	1	-
② LED Light Bar	1	1
③ Smoke Sensor	1 *	1 *
④ Door Sensor	2	2
⑤ Flashing LED Beacon	1	-
⑥ Temp. & Humid. Sensor	1	1
⑦ Shock Sensor	1 *	1 *
⑧ Fan Unit	2	2
⑨ PDU	2	2
⑩ Water Sensor	1	1

\* either smoke sensor or shock sensor

## Cabinet Level Connection



# EM-1001 / 1002 Environmental Control Management

To maintain an optimum operation conditions in data center, getting instant notification of various environmental fluctuations is vital.

We offer a wide range of sensors for a complete environmental monitoring, including temperature, humidity, smoke, shock, water leakage and cabinet access.

Peripherals such as LED light bar and flashing LED beacon, are designed for use with the sensors in order to allow a local environmental monitoring.



## Temp. + Humid. Sensor



- One sensor for temperature & humidity
- Low profile and light weight design with a magnetic base for easy affixing to cabinet

Part no. :

**EMS-102-2** with 2M cord

**EMS-102-4** with 4M cord

## Temp. Sensor



- Detection for temperature
- Low profile and light weight design with a magnetic base for easy affixing to cabinet

Part no. :

**EMS-101-2** with 2M cord

**EMS-101-4** with 4M cord

## Water Sensor



- Fluid leakage detection
- 5M rope round the cabinet bottom to detect any fluid flowing to the cabinet area
- IP65 cable joint connectors provided

Part no. :

**EMS-401-3** with 3M cord

## Smoke Sensor



- Safely operated smoke detection

Part no. :

**EMS-201-1** with 1M cord

**EMS-201-3** with 3M cord

## Shock Sensor



- Alert the physical vibration on the cabinet

Part no. :

**EMS-301-1** with 1M cord

**EMS-301-3** with 3M cord

## LED Beacon



- Highly visible for alerting user to alarm status

Part no. :

**EMS-602-1** with 1M cord

**EMS-602-3** with 3M cord

## Inductive Door Sensor



- Light weight, mini size & adhesive
- No custom cutting required on doors
- Easy for existing cabinet retrofit or integration to new cabinet

Part no. :

**EMS-502-2** with 2M cord

**EMS-502-4** with 4M cord

## Mechanical Door Sensor



- Low cost
- Precise
- Cost efficient integration to new cabinet
- Custom cutting required on door

Part no. :

**EMS-501-2** with 2M cord

**EMS-501-4** with 4M cord

## LED Light Bar



- Auto ON / OFF by door sensor detection
- Manual ON / OFF by software remote
- Magnetic base for easy affixing to cabinet
- Dimension ( W x D x H ) : 20 x 300 x 12 mm

Part no. :

**EMS-601-2** with 2M cord

**EMS-601-3** with 3M cord