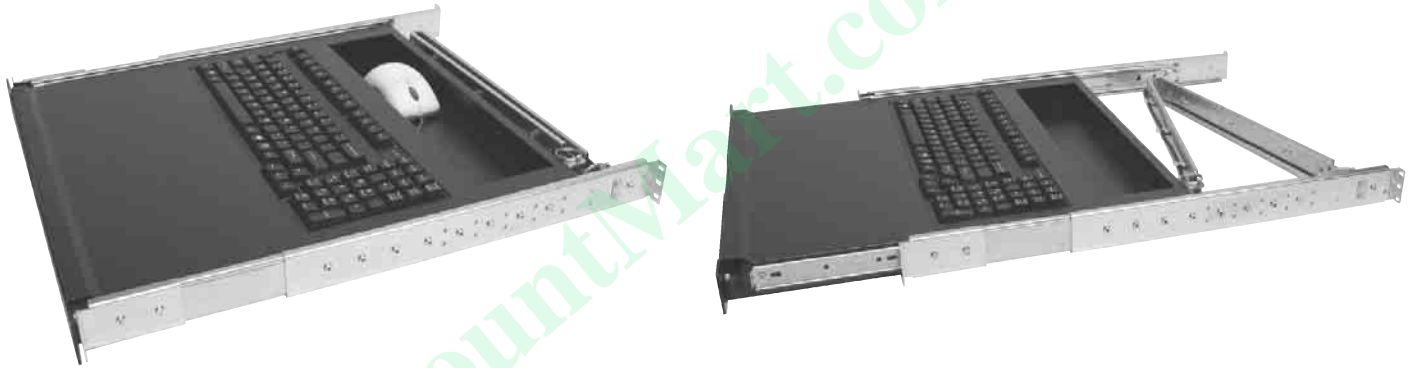


# 1U CHERRY™ KEYBOARD WITH REAL MOUSE STORAGE AREA



- 104 Key Cherry™ keyboard with mouse storage and use area in 1U of vertical 19" rack space.
- Mounted with included smooth action ball bearing slides which lock in the extended position.
- Convenient area in front of keyboard for easy mouse use, mouse stores behind keyboard.
- Retainer and lock options to keep unit contained in the rack when not in use.
- Housed in rugged steel construction with a durable powder coat finish.
- Includes sturdy steel detachable cable management arm.



(Mouse is optional)

## KEYBOARD SPECIFICATIONS

<b>Rollover:</b>	Alpha N-key rollover.
<b>Auto repeat:</b>	Yes.
<b>Self Diagnostics:</b>	At power on and system reset.
<b>Data Buffer:</b>	All codes buffered before sending.
<b>Operating voltage:</b>	+5 VDC +/- 5%.
<b>Operating current:</b>	35 mA.
<b>Interface:</b>	Keyboard: PS/2.
<b>Reliability:</b>	MTBF > 80,000 hours
<b>Compatibility:</b>	DOS, Windows 3.X, Windows 95/98, Windows NT, Windows 2000,XP.

Specifications subject to change without notice.

## GENERAL SPECIFICATIONS

<b>Dimensions:</b>	19.0" (W) x 1.75" (H) x 19.00" (D)
<b>Weight:</b>	17 lbs
<b>Temperature:</b>	Operating: 0°C to 50°C Storage: -20°C to 60°C
<b>Humidity:</b>	Operating: 10 to 85% RH (max)
<b>Colors Available:</b>	Choice of Black (BK) or Light Gray.

## MODEL NUMBER

**LCDK1006-C-BK-(X)**

Blank	= Standard Front Panel
R	= Retainer Screws (Left and Right)
L	= Front Panel + Lock (Right)
R-L	= Lock (Right) + Retainer Screw (Left)
BK	= Black color.
LG	= Light gray color (Optional)



*This unit is recommended for use with KVM switches.*

Offering OEM and custom solutions.  
Contact us for additional information.