

# LCDK1045/1046 1U Rackmount 2 Console 16/32 port RJ-45 KVM switch



## Two Console Cat5 KVM Benefits

- ▶ High density Cat5 KVM with either 16 or 32 ports in 1U
- ▶ Increased distance of 40m between your Server & KVM switch
- ▶ Enhanced rear cable management using Cat5 cords
- ▶ Mix PS/2, USB & SUN with Multi- Platform switch capability
- ▶ Secure remote access over 300m of Cat5

### Designed for:



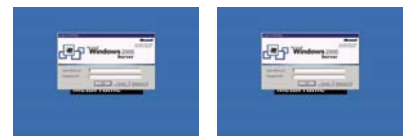
## Switch Features & Options

- Use of the RJ45 Cat5 interface allows for a higher number of ports in smaller density
- Greater distances between your switch and servers allow enhanced data centre rack layouts
- Traditional Cat5 cords, when compared to coaxial cables, provide simple cable management
- Mix legacy PS/2 servers with newer USB and SUN solutions
- Enhanced data centre security with a second user or console up to 300m from the installed switch / server
- Multi lingual on screen display menu
- Advanced user profiles and configurable OSD hot key combinations
- Dual power with failover  
12, 24 and 48 volt DC power options

## High Density Cat5 KVM with Two Console

Expanding its range of server management solutions Synergy Global Technology introduces its new high density two console 16 and 32 port Cat5 KVM switches. Designed to provide added benefits to its users the new switch range offers increased density, increased distances, enhanced cable management and multiplatform capabilities over traditional KVM switch platforms. Using either a PS/2 or USB dongle at the server end of the installation allows a user to cost effectively specify the switch to match the exact server configurations - multiplatform switches allow older or redundant servers to be migrated to servers with newer USB interfaces without replacing switch hardware.

Local screen      Remote screen



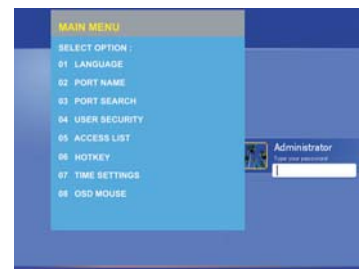
Full screen remote control without delay

## Secure Remote Access

The second console allows a user to work securely via a remote Keyboard, monitor and mouse over a Cat5 link up to 300m away from the installed switch / servers. This plug and play technology requires no software to be installed on the servers but provides seamless secure access over Cat5 4 pair copper cable to all switch ports allowing access to your servers even if the Ethernet / WAN network has failed or is unavailable.

## Enhanced User Interface

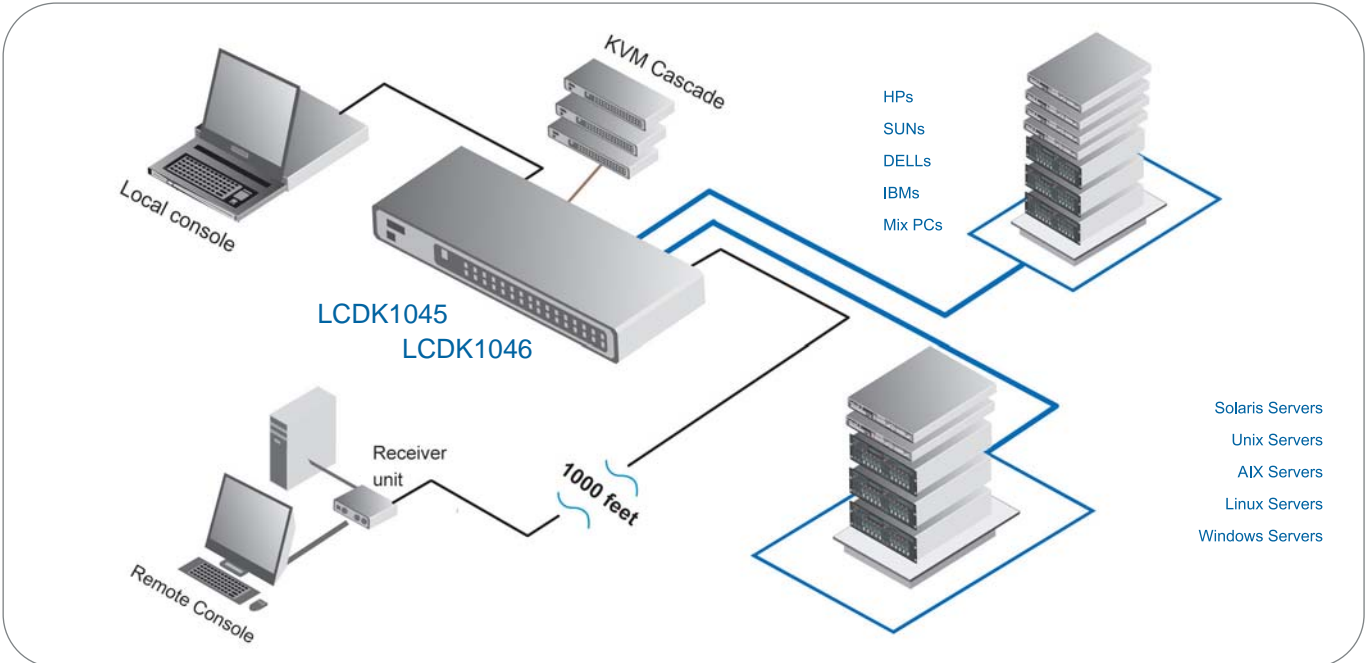
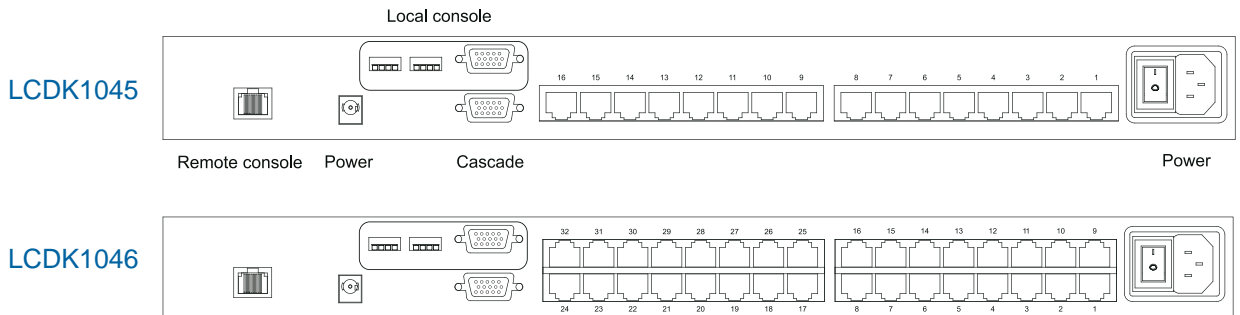
The user interface or OSD menu also offers many enhanced features for switch administration and user management, as an example the OSD allows Super Users to create custom user profiles / access rights for specific KVM ports. The OSD hotkey can also be configured using different key combinations and the multilingual interface allows users to select English, French, German, Spanish, Italian, Russian, Japanese and Simplified Chinese.



Advanced on-screen management

## Dimensions

Model	Product Dimension ( W x D x H )	Net Weight
LCDK1045	443 x 180 x 44 mm 17.4 x 7.1 x 1.73 inch	4 kg / 9 lbs
LCDK1046	443 x 180 x 44 mm 17.4 x 7.1 x 1.73 inch	4 kg / 9 lbs



**Accessories**



**Technical Specification**

- KVM Port**

Number of ports : 16 or 32

Connector : RJ-45

Connectivity : USB type or PS/2 type dongle, up to 40 meter ( 130 feet )
- Local Console**

Graphic connector : HDDB15-pin, VGA

Resolution : Up to 1600 x 1200

Input device : 2 x USB type A for keyboard & mouse
- Remote Console**

Connector : HDDB 15-pin, VGA

Resolution : Up to 1600 x 1200 ( 500 feet )  
Up to 1024 x 768 ( 1000 feet )

Input device : 2 x USB type A for keyboard & mouse

Remote I/O : RJ45 via Cat5 / Cat5e / Cat6 cable up to 1000 feet

Compensation : Auto adjust for cable length
- Expansion :** Up to 256 servers by 8-level cascade
- Compatibility**

Multi-platform : Mix PCs, SUNs, IBMs, HPs, DELLs Server

Support : Windows Vista, 2003 / XP / 2000, Linux, Netware, Unix
- Power**

Input : 100~240VAC, 50 or 60Hz, IEC type cord

Option DC : 12V / 24V / 48V DC input

Consumption : Max. 25 Watt
- Regulatory Approval :** FCC, CE
- Environmental**

Operating : 0 to 50°C

Storage : -10 to 60°C

Relative humidity : 90%, non-condensing

Shock : 50G peak acceleration (11ms, half-sine wave)

Vibration : 58~100Hz / 0.98G (11min / cycle)